



Dairy Goat Pellets

High protein, high energy pellets formulated from non-GMO* ingredients designed for dairy goats

A high performance high protein mineralised compound feed formulated to meet the Dairy Goat Co-op requirements (January 2019) being formulated free from both GM ingredients and PKE. Designed to support milk production and health of lactating dairy goats. A good option for milking house-cows.

KEY BENEFITS AND FEATURES

NRM Dairy Goat Pellets™ contain:

- Non-GM legumes (peas or beans) and/or canola meal to provide both rumen degradable and rumen by-pass protein to complement lower protein forages and deliver protein to support milk production.
- Non-GM grains and molasses to deliver a high level of fermentable energy to support body condition and milk production.
- Macro minerals calcium, phosphorus, sodium and magnesium for health and production.
- A combination of organic copper for improved bio-availability and inorganic copper to counter antagonists to support health and performance.
- Added vitamins for health, growth and fertility.
- Durable pellets for feeding in the milking shed or mixing with forage.



FEEDING RECOMMENDATIONS

Introduce gradually over 10-14 days, especially if stock are not accustomed to supplementary feeding as aggressive feeders may eat more than shy feeders initially and rumen microbes take time to adjust to new feeds.

If feeding at the rates indicated below build levels gradually over 10 to 14 days. Optimum feeding rates depend on the quality and quantity of pasture on offer and the level of production of the livestock being fed but typically do not exceed the recommended rates below for more than a week.

Ensure adequate amounts of forage (grazing and/or conserved forages such as silage, baleage or hay) and clean drinking water are available.

Caution: Do not feed to sheep, young calves or kids as NRM Dairy Goat Pellets™ contains a high level of bio-available copper. Not recommended for camelids and equines. Additional minerals may be required in certain circumstances, professional advice should be sought if additional selenium or copper is being delivered simultaneously via other routes.



PROTEIN



HIGH ENERGY



NON-GMO

TYPICAL ANALYSIS (APPROXIMATE ON A DRY MATTER BASIS)

Metabolisable Energy** MJ ME/kg	13
Crude Protein%	18
Dry Matter %	87

**Metabolisable Energy (ME) values are calculated by a registered laboratory from an equation and are not an actual measured value. Therefore they are only a guide for predicting the energy content of a feed.

Variations in nutritional values may occur due to natural variability in feed ingredients. Our FeedSafe NZ certified sites have well developed systems to minimise any variation from the typical levels shown.



Dairy Goat Pellets

TYPICAL FEEDING RATES (expected live weight in brackets)

Animal Species & Type	Feeding Rate (kg/head/day)
GOATS	Ideal for growth in young stock and milk production in milking does
MILKING DOE (55KG)	Typically 0.5kg to 0.75 kg per head, per day but could be up to 50% of the total diet dietary dry matter intake (up to 1.5kg for smaller, high yielding breeds at peak yield)
MILKING DOE (70KG)	Typically 0.5-1kg per head, per day but could be up to 50% of the total dietary dry matter intake (up to 2kg per head, per day for large, high yielding breeds at peak yield)
GROWING KID OVER 3 MONTHS (30KG)	0.25kg up to 0.5kg per head, per day
MILKING COW (400-500KG)	Up to 3kg per head, per day

INGREDIENTS SELECTED FROM

Wheat, maize grain, barley, canola meal, legumes (peas or beans), grain by-products, grass fibre, molasses, limestone flour, linseed flakes, dicalcium phosphate, magnesium oxide, salt, NZ vegetable oil, trace mineral and vitamin premix including 0.75mg added selenium/kg and 22.5mg added copper/kg, flavour, mould inhibitor.

NRM Dairy Goat Pellets™ formulations do not contain soya bean meal, soya hulls, corn gluten meal, maize DDGS, tapioca, copra meal, Palm Kernel Expeller, or any Restricted Animal Material.

*Formulated from non-genetically modified crops and by-products. May contain traces of GM material used in the feed mill.

STORAGE

Please ensure product is stored in a cool, dry and vermin free environment out of direct sunlight. Do not feed pellets which have become wet and moulded.

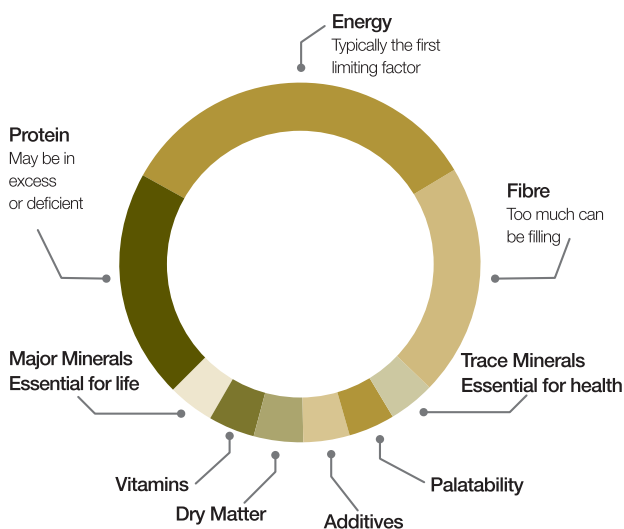
RECYCLE ME

NRM bags with the Recycle Me logo use 25% less plastic per bag compared to previous versions, giving them a lower carbon footprint and enable their recyclability through Agrecovery. NRM bags are made from woven polypropylene.

Scan the QR code below for more information.

WHAT ARE YOUR STOCK LACKING?

Choose the NRM product which best balances their diet.



NRM Multifeed Nuts are a good option for does that are not in milk and retired or pet goats to help maintain health and condition.

NRM Deer Performance Nuts are formulated to 12% crude protein and may worth considering when wanting to feed lower levels of compound feed to dairy goats on high quality pasture.



MARKETED AND DISTRIBUTED BY NRM
We guarantee the quality of our products.
For more product information and animal care advice please check out www.nrm.co.nz

PO Box 271, Christchurch 8140
 0800 800 380 | customerservices@nrm.co.nz | www.nrm.co.nz



RECYCLE ME

